



SUSTAINABLE
BUILDING
SOLUTIONS®

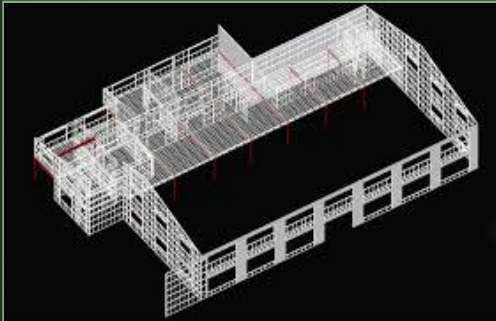
COLD FORM STEEL WALLING BROCHURE

Table Of Contents

04	The Process
06	Advantages of CFS
08	Uses
13	Wall Details
14	System Components
15	Projects
18	MEP Services Integration
19	SBS Factory
20	Our clients
21	Warranty
22	Codes & Standards
23	Policies



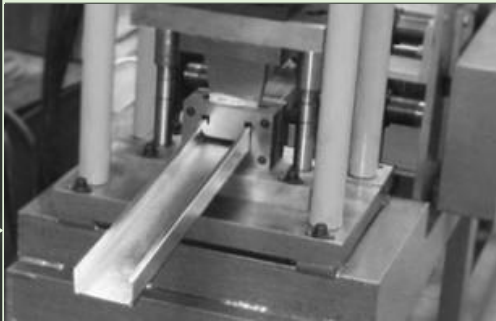
THE PROCESS



Wall panel design is done on ScotSteel 3D design software



After detailing ScotSteel, the design is exported to ScotRFPanels for fabrication.



Steel fed into roll former for precise C-section member production



Panels are assembled in minutes as per the project's requirements

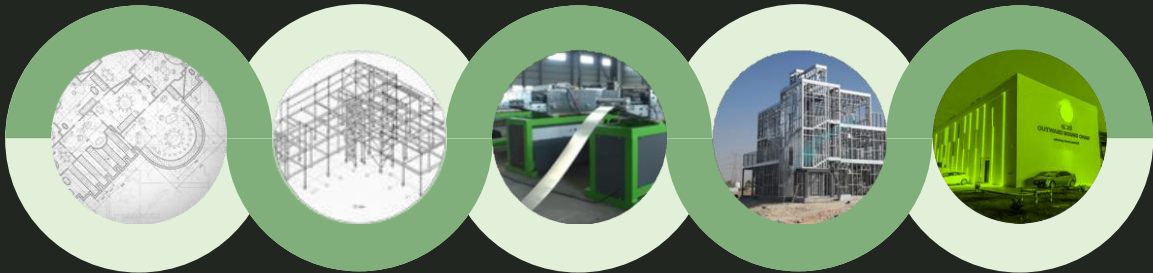


Panels are then installed at site quickly and efficiently with sleeves for MEP installed simultaneously.



Walls are insulated and finished with heavy duty boards.

THE PROCESS



Architectural design

LGS design

Fabrication of LGS

Installation of LGS frames

Completed building

Framing	Services	Finishes	Handover

ADVANTAGES OF STEEL CONSTRUCTION



SPEED

CFS walling is 10x faster than block work. 100 SQM of CFS walls being erected in the same man hours required to erect 10 SQM of block wall.



COST EFFECTIVE

CFS is up to 20% less than conventional construction and it's light-weight nature means significantly reduced foundation costs.



STRENGTH

CFS has a higher strength-to-weight ratio than RCC,



QUALITY

CFS is produced under controlled factory conditions so quality is assured.



SUSTAINABLE

Steel construction is 100% recyclable and all production waste is recycled. LGS also requires a fraction of transport and power required from conventional construction.



LESS MANPOWER

CFS requires 30% less man power on site than traditional RCC and blocks.



SAFER CONSTRUCTION

70% factory based.
Lighter than blocks and easier to handle.
Made-to-measure so no cutting at site.

ADVANTAGES OF STEEL CONSTRUCTION



FIRE RESISTANT

CFS walls can achieve up to 4 hours fire resistance.



HIGH INSULATION LEVELS

CFS walls have a higher thermal and sound insulation level than blocks and plaster.



QUALITY & FINISH ACCURACY

Produced in factory, little dependency on manpower. No warping or distortion to walls over time.



NO WET TRADES

CFS walls come ready to install with boards being installed at site. No mortar, cement or wet works are needed.



HIGHER WALLS

CFS walls can reach 12 metre heights without intermediary columns and beams.



EASY MEP INTEGRATION

CFS walls have pre-punched service holes in the panels, meaning all MEP conduits can be slipped in from factory, eliminating all chipping and chasing of walls.

USES

WALLING



- ▶ Machine manufactured so no distortion in walls.
- ▶ Higher insulation properties than blocks and plaster.
- ▶ 10x faster to install than blocks and plaster.
- ▶ +/- 0.2 mm accuracy tolerance so windows and doors can be ordered from pre-fabrication stage.
- ▶ Can achieve heights of 12 metres without intermediary columns and beams.
- ▶ Sustainable.
- ▶ No wastage.
- ▶ No mess at site.

STRUCTURAL



- ▶ Load-bearing structures capable of multi-story buildings.
- ▶ Lightweight and saves costs on foundations.
- ▶ 70% faster construction than concrete and block walls.
- ▶ No columns or beams required.
- ▶ Sustainable.

ARCHITECTURAL FACADES



- Versatile in nature making is a suitable material for external facades.



ROOF TRUSSES



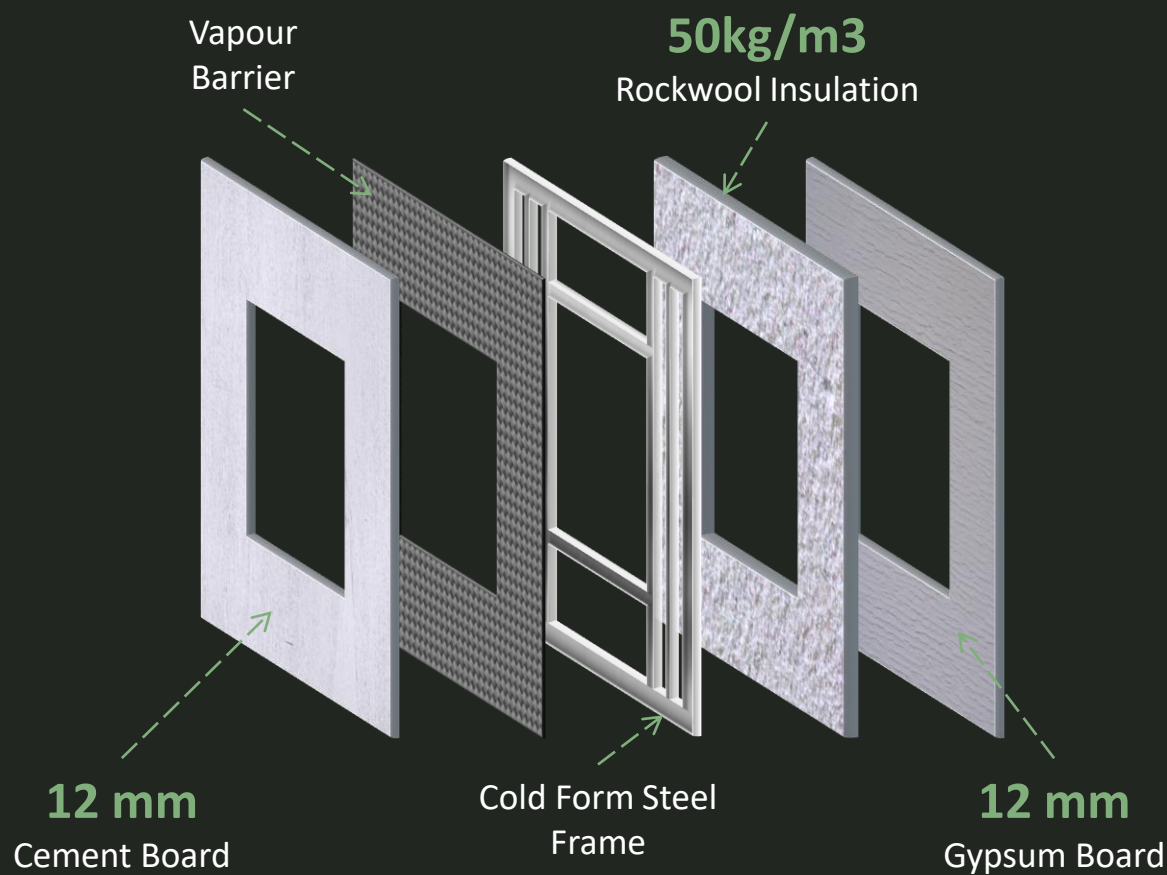
- Ideal for long spans and supporting high dead loads.

MEZZANINE FLOOR



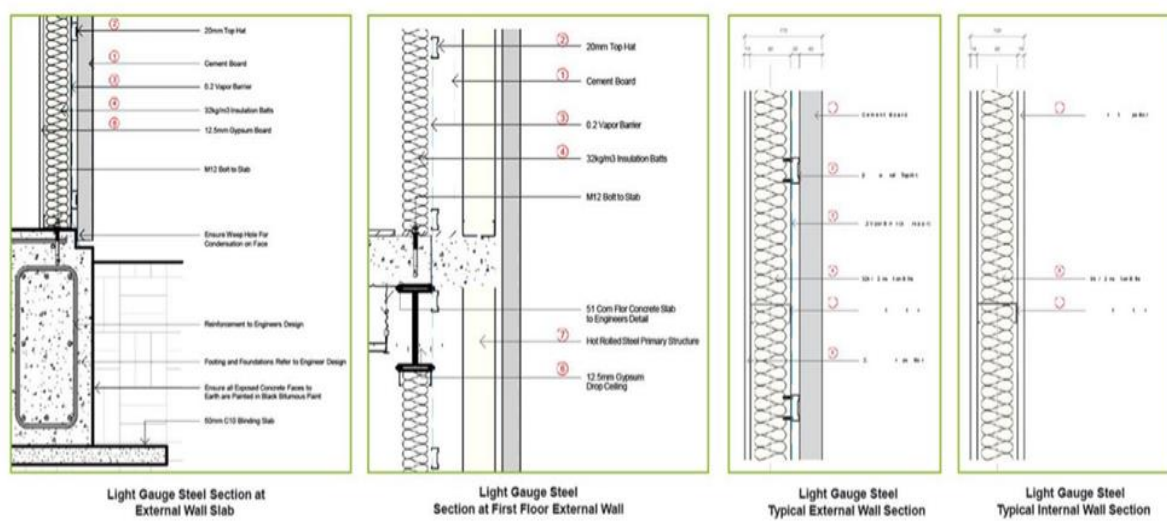
- ▶ Ideal for mezzanine structures due to its lightweight nature.
- ▶ No wet works or ground breaking to add a mezzanine to an existing structure.
- ▶ No requirement to enhance foundations to receive CFS mezzanine.

CFS Wall Details

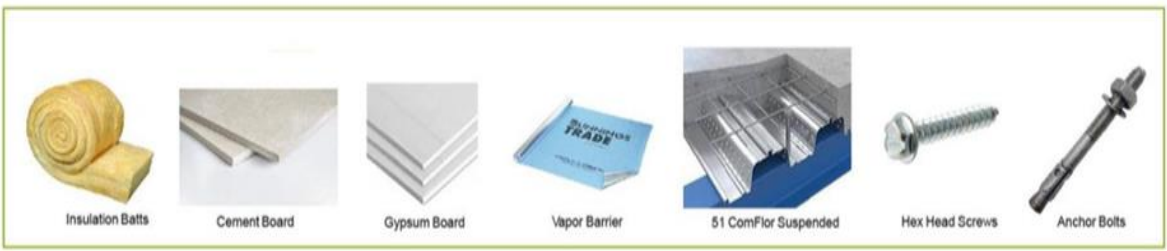


Typical External Wall U Value			
Item	Description	R Value	Units
1	50mm Insulated Wall Panel	2.27	
2	20mm Air Gap	0.87	
3	0.2 Vapor Barrier	0.06	
4	32kg/m ² Insulation Batts	3	
5	12mm Gypsum Board	0.45	
Total R Value		6.65	
Equivalent Total U Value		0.15	W/m ² K

SYSTEM COMPONENTS



SAMPLE OF SYSTEM COMPONENTS



Our Benchmark Projects

LGS PROJECTS IN OMAN



PDO BAIT AL BUSHRA



OUTWARD BOUND
OMAN



MARINA SALES OFFICE



ARABIAN NIGHT
RESORTS & SPA

Our Benchmark Projects

OUTWARD BOUND OMAN HQ

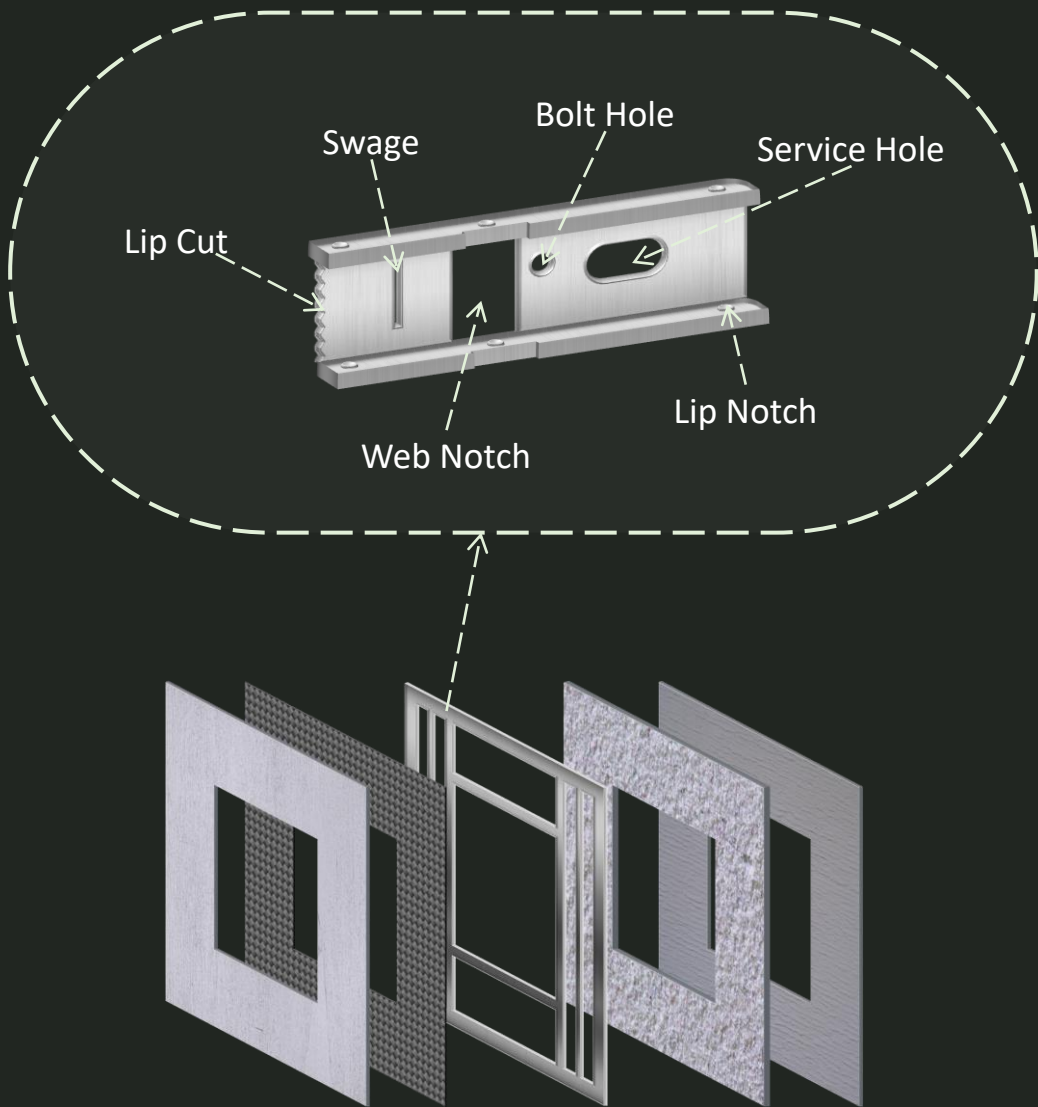


Our Benchmark Projects

AL MOUJ MARINA SALES OFFICE



MEP SERVICES INTEGRATION



The CFS frames have pre-punched holes from the factory to contain all MEP services. All conduits are put in the walls before closing with gypsum/cement board. No chipping or chasing is required.

OUR CLIENTS



MODERN COLLEGE
OF BUSINESS & SCIENCE



Zahara Tours
Oman's Premier Destination & Leisure Management Company



OUTWARD BOUND OMAN™
unlocking human potential



AL HAJIRY



SBS FACTORY



Our 7,000 SQM factory is in Duqm (Sezad free zone) which houses two state-of-the-art LGS (light gauge steel) machines which have a combined annual capacity of 2,500 metric tonnes (Which equates to a built-up-area of more than 100,000 SQM).

We have a mobile production unit which will be moved to site when the project is awarded and all LGS production will be done on-site to reduce transport time and increase efficiency.



CODES & STANDARDS



POLICIES



SUSTAINABLE
BUILDING
SOLUTIONS ®

HSE POLICY

We are committed to determine, review & ensure "Construction of Residential, Commercial & Industrial Building Projects in accordance with contract, applicable legal & HSE requirements.

Accidents and injuries are preventable through adoption and enforcement of stringent policies, procedures and constant performance monitoring. We believe & practice- people care approach and encourage the proactive involvement of interested parties towards identification, elimination, reduction, substitution or control of significant HSE impacts.

We aim to accomplish our goals through excellence in every activity, preventing accidents & injuries, protection of environment and prevention of pollution taking into consideration our current and future operational challenges, risk & opportunities.

We ensure that all projects carried out by SBS meets legal, statutory, management system, regulatory & other applicable standards.

SBS shall meet the policy **Intent through the following stated objectives:**

- Sustainable resource use.
- Protection of biodiversity & ecosystems, as applicable.
- Continually improving our management system including our workforce, processes and services.
- Ensure availability & usage of appropriate personal protective equipment.

Ensure communication, orientation, safety declarations, data sheets, signages directed towards minimizing fatalities, safe handling, storage & distribution.

Establish & maintain procedure for reporting, investigation, recording, analysing & necessary mitigation actions pertaining to accidents/incidents.

Management at SBS shall ensure that this policy is reviewed, made available to interested parties and amended as appropriate inline to the organizational objectives management system requirements & business needs.

Approved by: Director
Reference: SBS-HSE-Policy
Doc. Level: 01
Effective Date: 02.04.2019



SUSTAINABLE
BUILDING
SOLUTIONS ®

QUALITY POLICY

The Sustainable Building Solutions Quality Policy is a pledge that keeps us accountable for all of our actions in order to bring you the best service possible.

We are committed to meeting our internal and external customers' requirements on quality. We deliver right the first time every time and deliver projects within the scheduled time in compliance with contractual specification.

We always meet all applicable legal and regulatory requirements and we continuously improve the effectiveness of our Quality Management system.

We promote responsiveness, dependability, and competence of all our employees for delivering upon their commitments and to training and developing them accordingly.

We are endlessly dedicated to strengthening the effectiveness and use of internal processes, quality methods, and tools.

We implement effective NCR management: prevention, early detection, and resolution, using a uniform approach, tools, and reporting.

We forge mutually beneficial relationships with suppliers and contractors and consistently comply with our requirements.

The Quality Management System shall be reviewed on a regular basis by management to ensure its continued effectiveness. In order to achieve ongoing improvements and tangible benefits, SBS will establish defined objectives and targets that will be communicated and understood by all concerned personnel.

Management at SBS shall ensure that this policy is reviewed, made available to interested parties and amended as appropriate inline to the organizational objectives management system requirements & business needs.

Approved by: Director
Reference: SBS-Quality-Policy
Doc. Level: 01
Effective Date: 02.04.2019

